

SLS CONTROL

SEMICONDUCTOR LOGISTIC SERVICES

SLS CONTROL

SLS Control is a global procurement organization and independent distributor of electronic components. We provide professional and supply chain solutions to OEMs and contract manufacturers worldwide.

- o Our specialty is locating hard-to-find, obsolete, end-of-life (EOL) and highly allocated components with long lead times
- o SLS Control, is your full-service supplier
- o We support customers throughout the complete supply chain lifecycle
- o We have 36 years experience in the semiconductor market.

SMOOTH PROCURMENT SERVICES

Securing the procurement of the right products and solutions can be a daunting task and can result in downtime, lost productivity and variation in product quality, among other challenges.

From procurement to support, working with SLS Control our customers achieve positive business outcomes including; effective response and remediation of emergency situations, mitigation of long-lead times and

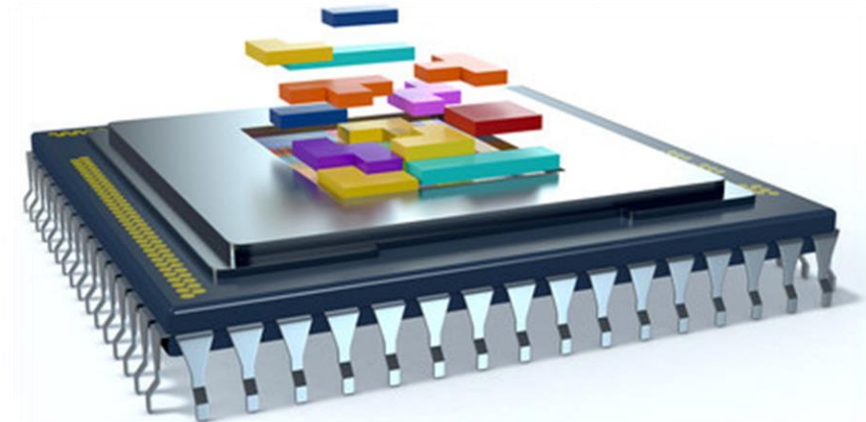
product shortages, and an ongoing commitment to provide personalized attention - regardless of your situation.

We offer products and solutions that cover the breadth of your supply chain needs – from sourcing to support.

- o A strong Partner at your side
- o Purchasing power
- o Payment options



Phone : +49 89 716 802233
sales@sls.com.de
www.sls.com.de



MANUFACTURERS LINE CARD

- o 3COM
- o Acer
- o Advanced Micro Devices
- o Agilent
- o **Altera**
- o AMP
- o Amphenol
- o Analog Devices
- o Atmel
- o Augat
- o AVX
- o Bourns
- o Chips & Technologies
- o Cirrus Logic
- o Cisco Systems
- o Citizen
- o C&K Components
- o Compaq
- o CTS
- o Cypress
- o Dallas Semi
- o Dell Computer
- o Dialight
- o Digital Equipment
- o Diodes, Inc.
- o Epson
- o Exar
- o Fairchild
- o Fujitsu
- o Gateway
- o General Semiconductor
- o Harris Semiconductor
- o Hewlett Packard
- o Hitachi
- o Hyundai
- o IBM
- o Infineon
- o **Intel**
- o International Rectifier
- o Intersil
- o ITT Cannon
- o IXYS
- o Kemet
- o Kingbright
- o KOA Speer Electronics
- o Lattice
- o Linear Technology
- o Lucent
- o Mallory
- o Marvell
- o Maxim
- o Maxtor
- o Micron
- o **Microchip**
- o **Microsemi**
- o Mitsubishi
- o Molex
- o Motorola
- o Murata
- o National Semiconductor
- o NEC
- o NIC
- o Nichicon
- o NXP
- o On Semi
- o Oki
- o Panasonic
- o Pericom
- o Philips
- o Qorvo
- o Renesas
- o Rohm
- o Samsung
- o Samtec
- o Seagate
- o ST Micro
- o Sharp
- o Siemens
- o Sony
- o Spansion
- o Sprague / Vishay
- o Sun Microsystems
- o TEAC
- o TE Connectivity
- o **Texas Instruments**
- o **Toshiba**
- o Tyco
- o Unitrode
- o Vishay
- o Western Digital
- o Xicor
- o Xilinx

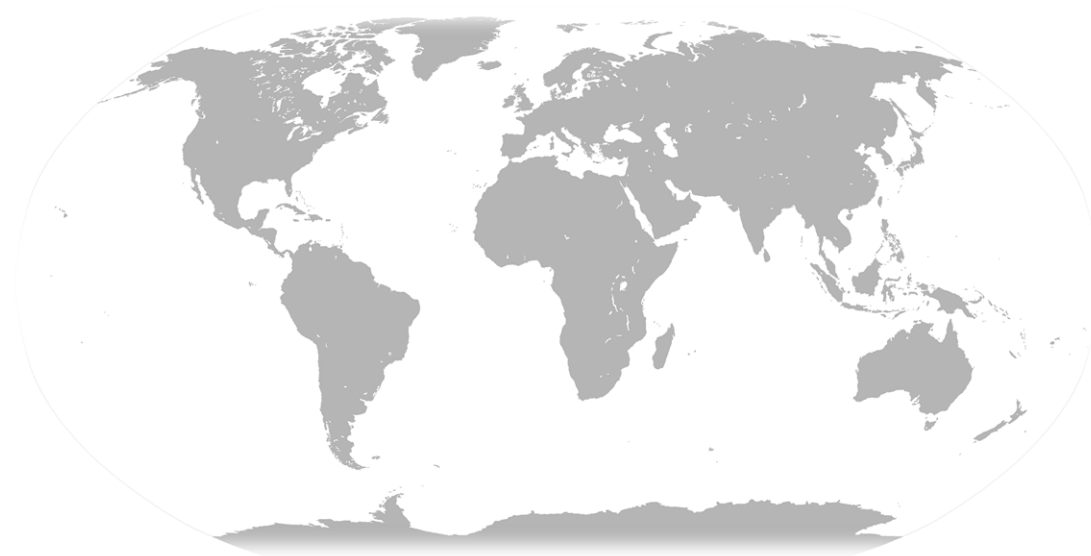
COMMITMENT TO OUR CUSTOMERS

RESPONSIBILITY

A commitment to excellence to customer satisfaction is the trademark of SLS Control . It is our goal to sustain a corporate culture based on integrity - one that is focused on treating our customers ethically and making their priorities, our priorities.

The background of our people, and the skills and dedication they bring to their work, defines our ongoing commitment to our customers.

GLOBAL PURCHASING POWER



CORPORATE HEADQUARTERS



SLS Control GmbH
Alte Landstrasse 21
85521 Ottobrunn
Phone: +49 89 716 80 22 33
Fax: +49 89 716 80 22 35
Email: sales@sls.com.de



GLOBAL OFFICES

- o Germany Munich
- o Hong Kong
- o Taiwan Taipeh



www.sls.com.de